

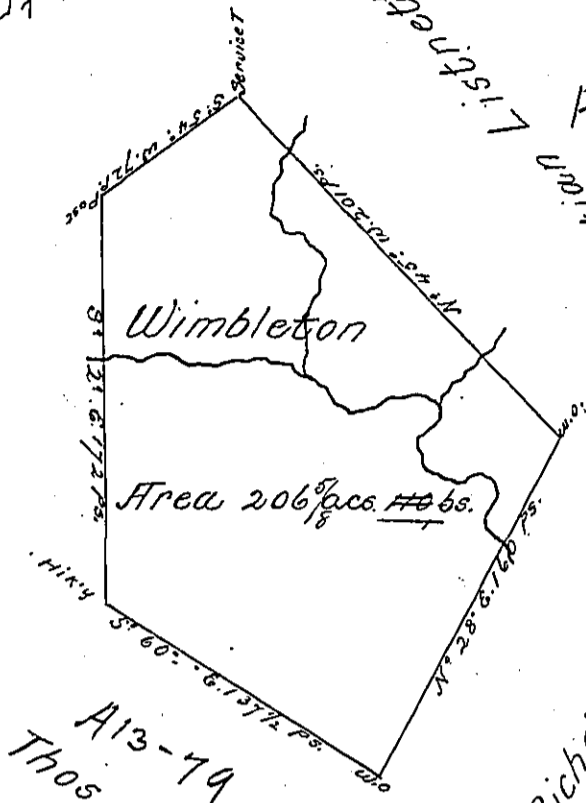
C-19-90

Adam Hickman

A-38-152

Robert Rutherford

A Virga Patent



A81-248

A13-79
Thos. Faucitt

Richd. Boyce
A81-249

A Draught of a Survey called "Wimbleton" situate on the waters of Chartiers Bk. in Washington County Contg. 206 acs. 110 ps. and the usual allow^{ts} for Highways & executed Nov. ye. 10th. 1786 in Pursuance of a warrant granted to Wm. Wilson for 150 ac. dated Augst. ye. 24th. 1786.

Presley Nevill }
 Matthew Ritchie } 2 Gps.

Jno. Lukens Esqr. S. G. L.

IN TESTIMONY that the above is a copy of the original remaining on file in the Department of Internal Affairs of Pennsylvania, made conformably to an Act of Assembly approved the 16th day of February, 1833, I have hereunto set my Hand and caused the Seal of said Department to be affixed at Harrisburg, this seventh day of November 1899

James W. Pitta
 Secretary of Internal Affairs.